

# RESHAPING THE EDGE

## DESIGN COMPETITION

# INTRODUCTION

As part of the annual CEDTI Colloquium 2025 entitled 'Living on the Edge – Coastal Transitions in the Indian Ocean', CEDTI proposes a participatory design competition to imagine the future of coastal communities in Mauritius. 80% of SIDS (Small Island Developing State) populations live near coastal zones which are heavily impacted by coastal erosion and flooding during the climate crisis. Although a recent study (Ghasemi, 2025) suggests that exposure to extreme weather does not always lead to support for climate action, adaptation measures remain necessary.

The proposed site for this competition is Bel Ombre Village, a coastal village developed during the rise of the historical sugar industry and between the Black River Bel-Ombre Reserve and a shallow lagoon. The site, similar to all coastal areas in Mauritius, is faced with the following climate impact: rising sea levels, pressure on coastal ecosystems and other drainage issues from new adjacent developments. Since 2017, Bel-Ombre village has been classified as high risk areas by the Ministry of Civil Services. Living in territories such as Bel Ombre, requires a series of reflections to develop adaptation strategies for the long term. Together with inhabitants and stakeholders, the competition aims to reimagine the Bel Ombre residential area for 2050, exploring how these areas can become models of resilient, supportive, and ecological living.





**The participatory design competition aims to generate new hypotheses for future developments**



## KEY ELEMENTS THAT ARE TO BE INCLUDED:

01

### Climate and hydrological resilience

Water management and adaption to rising water levels with nature-based solutions

02

### Innovative housing models

Collective at a community scale (highlighted in dashed green line on site plan) and individual prototypes adapted to flooding (as highlighted in green and yellow boxes on site plan).

03

### Circular and contextual design

Deconstruction and reuse of materials embodying circular economy principles

04

### Living public spaces and ecosystems

Creating resilient public realms and human-nature ecosystems

05

### Governance and social cohesion

Hybrid cooperation models and shared-use strategies between locals and authorities.



# SITE

This design competition centers on the coastal community of Bel Ombre Village, inviting participants to engage deeply with its evolving landscape and lived realities. Participants are required to analyze the site at a territorial scale (as indicated in red), fostering a holistic understanding of the environmental, social, and spatial dynamics at play.

Participants are encouraged to critically examine current and future uses of the area and to envision new modes of living in response to climate and coastal transformation. **The challenge is to imagine resilient, inclusive futures that support the transition to adaptive, community-centered ways of inhabiting the coastline.**

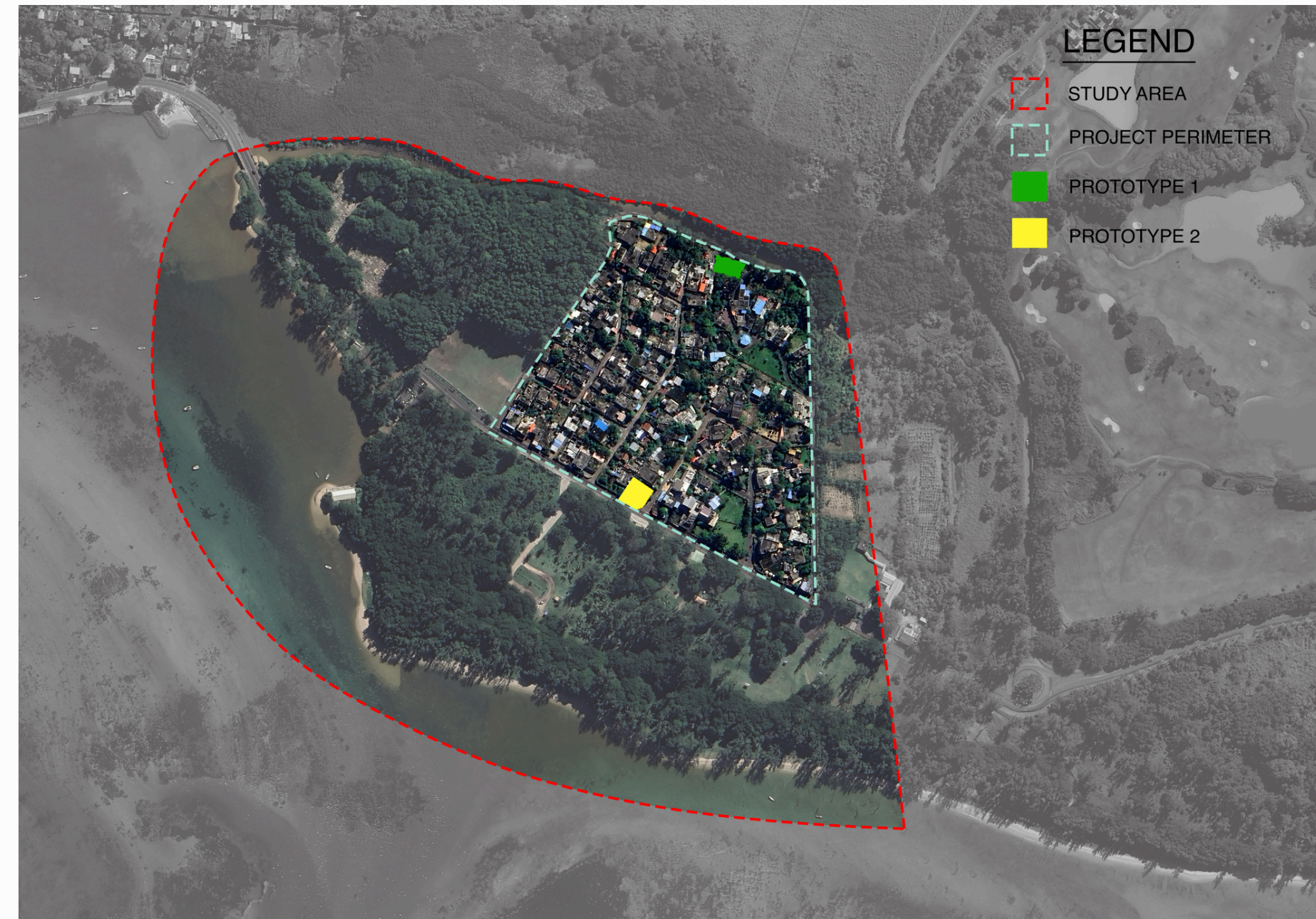
Each team will propose the design of **one prototype — either the Green Site or the Yellow Site**—within the designated perimeter (outlined in dashed green). This perimeter encompasses the public beach of Bel Ombre, the St. Martin stream and swamp, and the adjacent NHDC and SILWF residences.

The two sites present distinct water-related challenges:

■ **Green Site:** Confronts inland flooding and rising river levels during heavy rainfall.

■ **Yellow Site:** Faces threats from rising sea levels and coastal erosion.

Each proposal should be innovative, feasible, and context-sensitive, aiming not only to mitigate risk but also to strengthen the relationship between the Bel Ombre community and their environment.



\*For more details about the sites, please refer to the Design Pack sent by email after online registration.



# ELIGIBILITY

The competition is open to architects, urban planners, landscape architects, engineers, designers, and students in architecture, design and engineering. This single category brings together diverse profiles to foster innovative and engaged proposals that may range from speculative narratives to technically grounded or strategic responses. Participants are encouraged to address the site at multiple scales, from local interventions to territorial frameworks, provided the proposal demonstrates critical insight, coherence, and relevance.

**Participation is individual** and for Mauritian residents only. Registration is open to one person per entry, and only one proposal will be accepted per participant.

**An Entry fee of MUR 250 is applicable at the time of registration online.**

Participants who wish to withdraw before the 30 August 2025 are eligible to a full refund.

# AWARDS

01

## **Jury Selection Award**

Prize : A trip to the first Pan-African Biennale in Nairobi in September 2026.

A panel of esteemed jury members will evaluate submissions from five finalists and designate one project for the Jury Selection Award. In recognition of their achievement, the winner will receive a curated cultural trip. Additionally, all finalists and the winning entry will be featured in the annual CEDTI Research Chronicles publication.

02

## **Public Choice Award**

Prize : Commemorative Trophy

This award will be determined by the live audience present at the final event. Attendees will vote to select one standout project from among the five finalists to receive the Public Choice Award, honoring its resonance and appeal within the wider community.

# CALENDAR

01- 30  
Aug

Online Registration Open

06  
Sep

Compulsory Technical Site  
Visit \*

20  
Oct

Submissions Open

03  
Nov

Submissions Closed

14  
Nov

Finalists Selection Announcement

18  
Nov

Winner Announcement



\*Details of the site visit will be communicated by email. If a participant is unable to attend the site visit, they may designate a proxy to attend on their behalf.

# SUBMISSION GUIDELINE

**Two A1 sheets (Portrait** format and in **PDF)** presenting the proposal at both the **territorial/community scale** (addressing key elements 1, 3, 4 & 5 on page 3) and the **individual housing scale (addressing key element 2).**

A **maximum of 500 words** will be accepted per page. Language: English, French or Kreol.

Only digital submission will be accepted and the file names are to be written as follows: **'CODE\_Title of project'**

# EVALUATION CRITERIA

- **Innovation & creativity (30%)**
- **Technical & economic feasibility (25%)**
- **Adaptability to local context (20%)**
- **Social & environmental impact (15%)**
- **Clarity & quality of presentation (10%)**

# REGISTRATION GUIDELINES

01

All registrations are to be completed via the website link:

[www.cedti.net/designcompetition2025](http://www.cedti.net/designcompetition2025)

after which each participant will be required to proceed with payment of the entry fee.

02

All submissions will be anonymously evaluated.

**A CODE will be assigned after payment of the entry fee.**

03

Only digital submission will be accepted and the file names are to be written as follows: **'CODE\_Title of project'**



# CONTACT US

<https://www.cedti.net/>

[info@cedti.net](mailto:info@cedti.net)

+230 5977 8500